

Mosquito Life Cycle

STATION #10

Directions:

1) Read about the "Mosquito Life Cycle" on the FACT SHEETS.

2) Then sort the cards into complete life cycles. How many complete life cycles are there? How many cards are needed to make a complete life cycle?

3) Use this information to write a number sentence that would show how many cards are used in all.

Think about...

- How many cards were needed to make a complete life cycle?
- How many complete mosquito life cycles were you able to make with the cards?
- Is there more than one mathematical operation to show how many cards were used in all? (Hint: You can use addition or multiplication.)
- What would be a number sentence to show how many cards are needed to complete 25 mosquito life cycles? (see key)



Purpose: Learn the life cycle of a mosquito while using math equations.

Mosquito Life Cycle

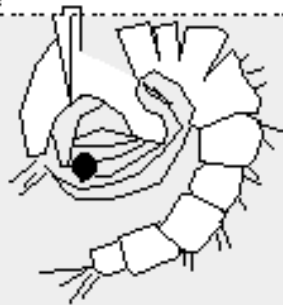
STATION #10

Life Cycle Cards

Pupa

It lives just under the water's surface.

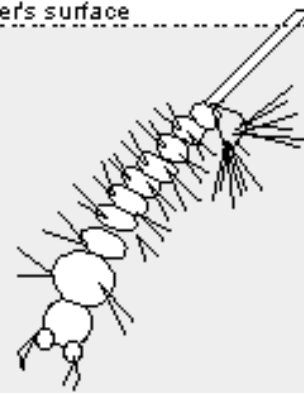
the water's surface



Larva

It lives just under the water's surface.

the water's surface



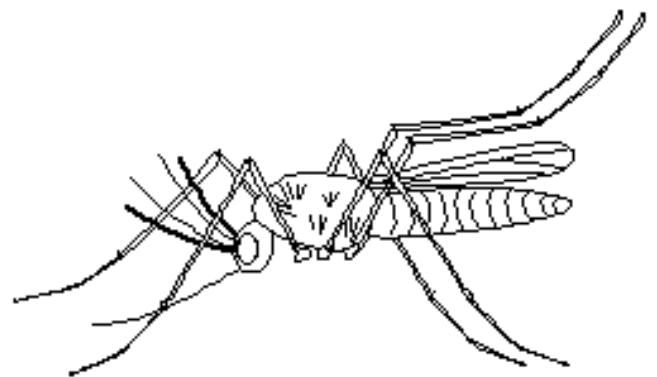
Raft of Eggs

Eggs are laid on the surface of fresh water.

the water's surface



Adult



Mosquito Life Cycle

STATION #10

FACT SHEETS

Mosquito Life Cycle Fact Sheets can be obtained at:

*"Mosquito Hygiene" throughout the Life Cycle of Cluex
Mosquitoes*

[http://environmentalrisk.cornell.edu/WNV/WNVEducDocs/
MosqHygienePoster6-02.pdf](http://environmentalrisk.cornell.edu/WNV/WNVEducDocs/MosqHygienePoster6-02.pdf)

*Tulsa Health Department West Nile Virus Fact Sheet,
page #2*

http://www.tulsa-health.org/env/wnv_factsheet.pdf